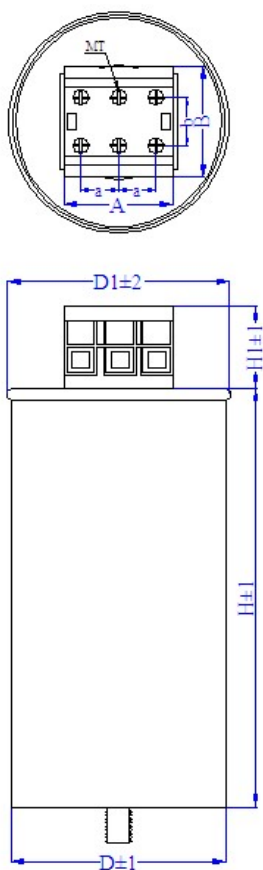


C71 系列 SERIES

■ 外形图 Outline Drawing



■ 特点

- 自愈
- 金属化聚丙烯薄膜结构
- 防爆设计，过压力保护更安全

■ 主要用途

- 适用于三相功率因数校正、LCL滤波

■ Features

- Self-healing
- Metallized Polypropylene film
- Anti-explosion design, overpressure tear-off fuse more safety

■ Typical application

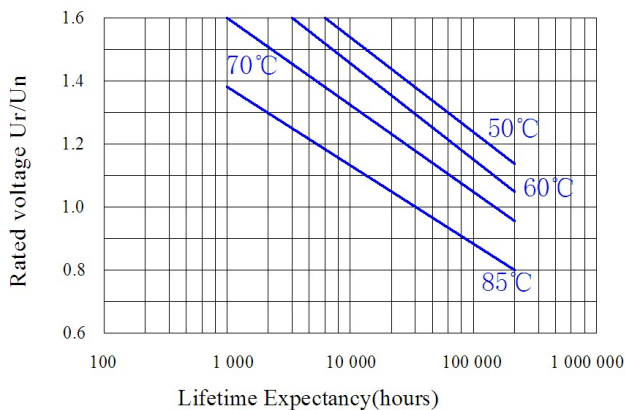
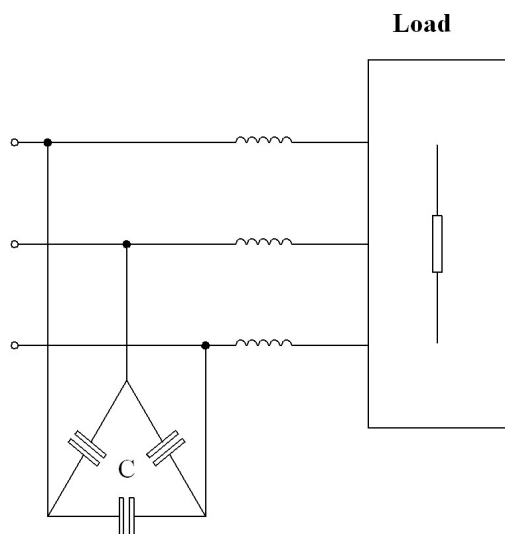
- Suitable for power factor correction and LCL filter

■ 技术参数 Technical Specifications

项目 Items	性能要求 Characteristics	
引用标准/Reference standards	GB/T 17702 IEC 61071	
容量范围/Capacitance	8 μ F ~330 μ F	
额定电压/Rated Voltage	240V.AC~850V.AC	
容量偏差/Tolerance	$\pm 5\%$ -5%~+10%	
损耗角正切/Dissipation factor	$\text{tg}\delta \leq 2 \times 10^{-4}$ at 25 $^{\circ}$ C $\pm 5^{\circ}$ C,50/60Hz	
绝缘电阻/Insulation resistance	C·R ≥ 5000 S,at 100V.DC,25 $^{\circ}$ C $\pm 5^{\circ}$ C,60s	
工作温度范围/Operating temperature range	-40 $^{\circ}$ C~70 $^{\circ}$ C	
极间耐电压/Test voltage between terminals	1.5Un (10S,25 $^{\circ}$ C $\pm 5^{\circ}$ C)	
极壳耐电压/Test voltage between terminals and case	3000V.AC(10S,50/60Hz,25 $^{\circ}$ C $\pm 5^{\circ}$ C)	
过电压/Over voltage	1.1 Un	8 hrs/day
	1.15 Un	30 min/day
	1.2 Un	5 min/day for 1min during life 200 times
	1.3 Un	1min/day for 1min during life 200 times
最大安装扭矩/ Max. Torque of Installation	10Nm	
最大电极扭矩/Max. Torque of terminals	M5:2.0Nm	M6:3.0Nm
最高使用海拔/Max Altitude	2000m	
预期寿命/Expected lifetime	$\Delta C/C$ $\leq 5\%$ after 100 000hrs under rated conditions @ 50 $^{\circ}$ C	
电容内部连接方式/Capacitance internal connection	Connect triangle Δ	
内部填充料/Internal stuffing	Oil(Non PCB)	

■ 典型线路/Typical circuit

■ 预期寿命曲线/ Expected lifetime curve



■ 产品编码说明/Part number code system

▲ 18位产品代码如下:

▲ The 18 digits part number is formed as follow:

C	7	1															
1	2	3	4	5	6	7	8	9	10	11	12	13	14	15	16	17	18

1~3位: 型号代码

Digit 1~3: Series code

4~6位: 标称容量

Digit 4~6: Rated capacitance value

如: 104=10×10⁴PF=0.1uF

Example: 104=10×10⁴PF=0.1uF

7~10位: 内部特征码

Digit 7~10: Internal use

11位: 容量偏差

Digit 11: Capacitance tolerance

J=±5%、K=±10%、M=±20%

J=±5%、K=±10%、M=±20%

12~13位: 额定均方根电压

Digit 12~13: Rated RMS voltage

M2=240VAC、X2=450VAC

M2=240VAC、X2=450VAC

Z2=550VAC、62=700VAC

Z2=550VAC、62=700VAC

72=750VAC

72=750VAC

14~17位: 外形尺寸代码

Digit 14~17: Dimension code

14位 Digit 14		15位 Digit 15		16位 Digit 16		17位 Digit 17	
代码 Code	直径 Diameter	代码 Code	高度 Height	代码 Code	电阻 Resister	代码 Code	引出端规格 Specifications of terminals
7	76	D	140	Y	Yse	p	插销 Plug bolt
8	86	F	170	N	No		
9	96	G	200				
A	106	H	230				
B	116						
C	136						

18位: 安装形式

Digit18: Fix style

F=平底 S=M12*16 螺杆 T=M16*25 螺杆

F=Flat S=M12*16Male T=M16*25Male

■ 标准品一览表 Standard size

静电容量 Cap(uF)	Outline size (mm)		Rs (mΩ)	Ls (nH)	R _{th} (°C/W)	I _{max} (A)	İ (KA)	İs (KA)	Weight (kg)	Part number
	ΦD	H								
Urms: 240V.AC										
3*84	76	200	3*1.5	100	4.5	3*34	1.6	4.8	1.1	C71846****□M27G+P○
3*105	76	230	3*1.6	120	4.0	3*36	1.5	4.5	1.2	C71107****□M27H+P○
3*160	86	230	3*1.2	120	3.5	3*43	2.3	6.9	1.6	C71167****□M28H+P○
3*250	116	200	3*0.8	110	3.1	3*53	3.0	9.0	2.4	C71257****□M2BG+P○
3*330	116	230	3*0.9	130	2.7	3*54	4.8	14.3	2.8	C71337****□M2BH+P○
Urms: 450V.AC										
3*13	76	140	3*1.8	100	6.2	3*22	0.8	2.5	0.9	C71136****□X27D+P○
3*16.5	“	“	3*1.5	“	5.6	3*25	1.1	3.2	0.9	C7116E****□X27D+P○
3*26.5	“	200	3*2.3	“	4.4	3*25	0.8	2.3	1.2	C7126E****□X27G+P○
3*33	“	“	3*1.9	“	4.0	3*28	1.0	2.9	1.2	C71336****□X27G+P○
3*50	86	“	3*1.4	110	3.4	3*34	1.5	4.4	1.4	C71506****□X28G+P○
3*66	“	230	3*1.5	120	2.9	3*36	1.4	4.3	1.7	C71666****□X28H+P○
3*83	116	200	3*1.1	110	3.1	3*40	2.4	7.2	2.4	C71836****□X2BG+P○
3*100	“	“	3*1.0	“	2.8	3*43	2.9	8.7	2.4	C71107****□X2BG+P○
3*133	136	“	3*0.9	120	2.5	3*46	3.9	11.6	3.3	C71137****□X2CG+P○
3*154	“	“	3*0.8	“	2.3	3*48	4.0	12.0	3.3	C71157****□X2CG+P○
3*170	“	230	3*0.9	130	2.2	3*45	4.5	13.4	3.8	C71177****□X2CH+P○
Urms: 550V.AC										
3*19	76	170	3*1.0	110	5.1	3*32	1.0	2.9	1.0	C71196****□Z27F+P○
3*23	86	“	3*0.9	“	4.8	3*35	1.2	3.6	1.2	C71236****□Z28F+P○
3*39	96	200	3*0.9	“	3.9	3*40	1.4	4.3	1.7	C71396****□Z29G+P○
3*48	“	230	3*1.0	120	3.5	3*42	1.3	4.0	1.9	C71486****□Z29H+P○
3*96	136	“	3*0.8	130	2.8	3*47	2.6	7.9	3.8	C71966****□Z2CH+P○
Urms: 700V.AC										
3*33.5	116	170	3*0.8	110	3.5	3*42	1.6	4.9	2.2	C7133E****□62BF+P○
3*38	“	200	3*0.8	“	“	3*40	1.3	3.9	2.4	C71386****□62BG+P○
Urms: 750V.AC/850V.AC										
3*8	76	170	3*1.3	110	5.6	3*24	0.6	1.7	1.0	C71805****□727F+P○
3*10	86	“	3*1.1	“	5.2	3*27	0.7	2.0	1.0	C71106****□728F+P○
3*12	“	“	3*1.0	“	4.8	3*29	0.9	2.6	1.0	C71126****□728F+P○
3*17	106	“	3*0.9	“	4.3	3*34	1.1	3.4	1.7	C71176****□72AF+P○
3*23	86	230	3*1.1	120	3.4	3*37	0.9	2.7	1.6	C71236****□728H+P○
3*28	106	“	3*1.0	130	3.3	3*38	1.0	3.0	2.2	C71286****□72AH+P○
3*33	“	“	3*1.0	“	3.0	3*41	1.2	3.5	2.3	C71336****□72AH+P○
3*38	116	“	3*0.9	“	2.9	3*42	1.4	4.1	2.8	C71386****□72BH+P○
3*49	136	“	3*0.9	“	2.7	3*43	1.9	5.7	3.7	C71496****□72CH+P○
3*55.8	“	“	3*0.8	“	2.5	3*45	2.2	6.5	3.8	C7155H****□72CH+P○

- ◇ 备注：特殊需要可根据客户要求另行设计
- ◇ Note: Special requirements can be designed according to customer requirements
- ◇ 1.“****”表示内部特征码；“****”=Internal use
- ◇ 2.“□”表示容量偏差；“□”=Capacitance tolerance
- ◇ 3.“+”表示是否装配放电电阻；“+”=Wher has Resister
- ◇ 4.“○”表示安装形式；“○”= Fix style