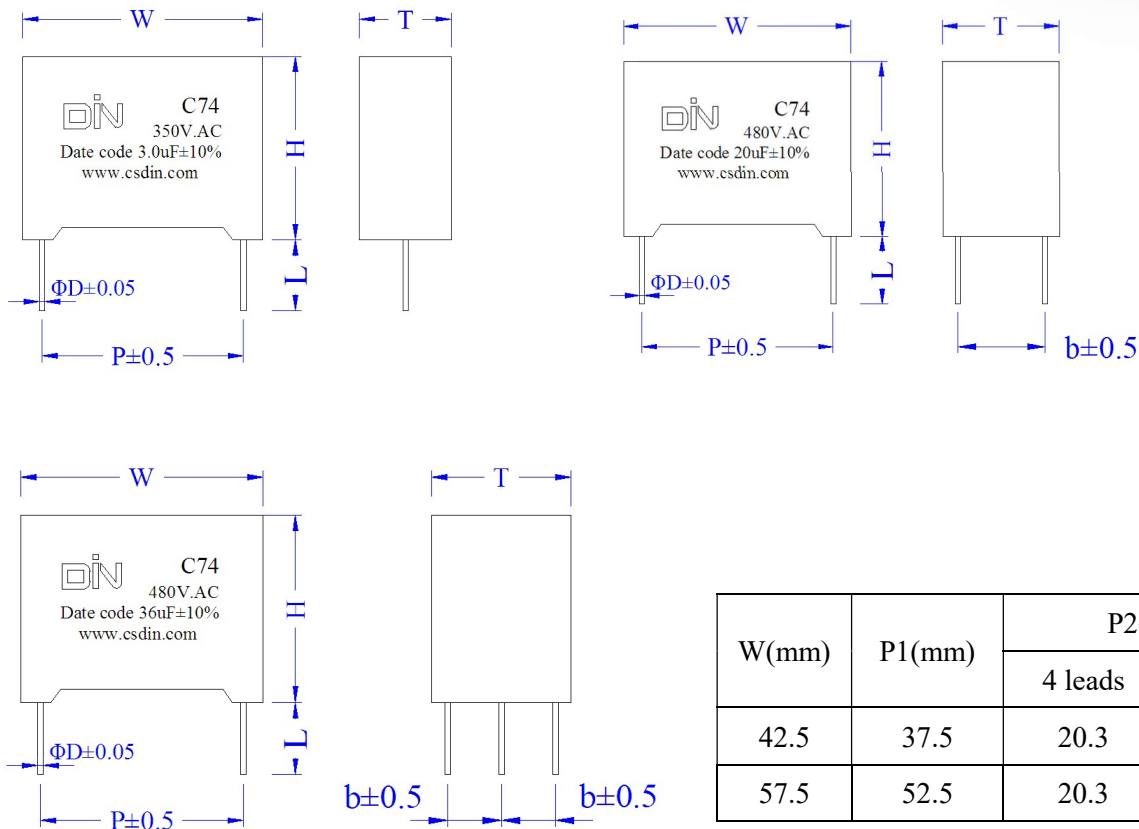
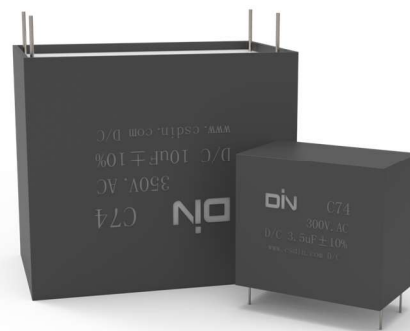


C74 系列 SERIES

■ 外形图 Outline Drawing



■ 特点

- 高纹波电流，高 dv/dt 承受能力
- 耐压高，具有自愈性
- 自感小、等效串联电阻小

■ 主要用途

- 适用于小功率交流输出滤波电路，如：UPS、太阳能光伏DC/AC逆变器中的LCL滤波

■ Features

- High ripple current, high dv/dt withstand capability
- Resistance to high voltage, with self-healing
- Low ESL and ESR

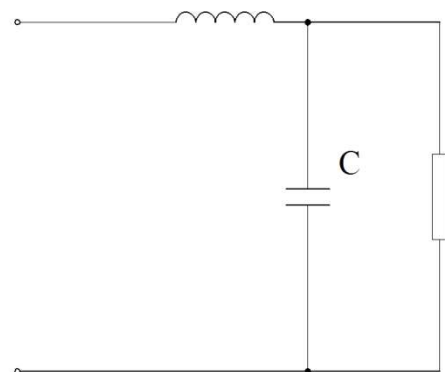
■ Typical application

- Suitable for small power AC output filter, i.e. UPS, Solar Photovoltaic DC/AC inverter with LCL filter

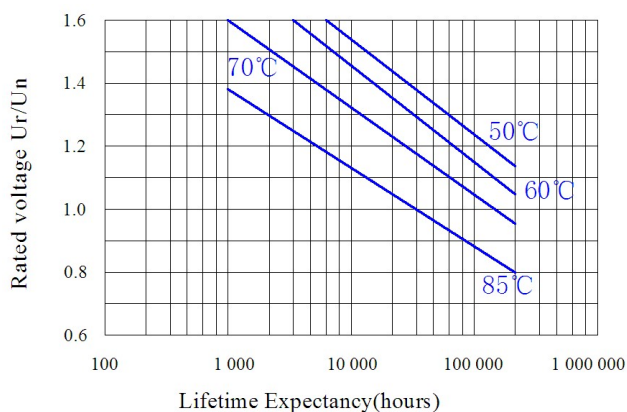
■ 技术参数 Technical Specifications

项目 Items	性能要求 Characteristics			
引用标准/Reference standards	GB/T 17702 IEC 61071			
容量范围/Capacitance	4.0μF ~60μF	4.0μF ~60μF	4.0μF ~60μF	4.0μF ~60μF
额定电压/Rated Voltage	250V.AC	350V.AC	425V.AC	480V.AC
额定均方根电压/Rated RMS Voltage(Urms)	180V.AC	250V.AC	300V.AC	350V.AC
最大连续直流电压/Maximum continuous DC Voltage	300V.DC	475V.DC	560V.DC	600V.DC
容量偏差/Tolerance	±5% ±10%			
损耗角正切/Dissipation factor	$tg\delta \leq 20 \times 10^{-4}$ at 25°C±5°C,1KHz			
绝缘电阻/Insulation resistance	C·R≥5000S,at 100V.DC,25°C±5°C,60s			
工作温度范围/Operating temperature range	-40°C ~105°C			
极间耐电压/Test voltage between terminals	1.5Un (10S,25°C±5°C)			
极壳耐电压/Test voltage between terminals and case	3000V.AC(10S,50/60Hz,25°C±5°C)			
最高使用海拔/Max Altitude	2000m			

■ 典型线路/Typical circuit



■ 预期寿命曲线/ Expected lifetime curve



■ 产品编码说明/Part number code system

▲ 18位产品代码如下:

▲ The 18 digits part number is formed as follow:

C	7	4															
1	2	3	4	5	6	7	8	9	10	11	12	13	14	15	16	17	18

1~3位: 型号代码

Digit 1~3: Series code

4~6位: 标称容量

Digit 4~6: Rated capacitance value

如: 104=10×10⁴PF=0.1uF

Example: 104=10×10⁴PF=0.1uF

7~10位: 内部特征码

Digit 7~10: Internal use

11位: 容量偏差

Digit 11: Capacitance tolerance

J=±5%、K=±10%、M=±20%

J=±5%、K=±10%、M=±20%

12~13位: 额定均方根电压

Digit 12~13: Rated RMS voltage

J2=180VAC、N2=250VAC

J2=180VAC、N2=250VAC

S2=300VAC、U2=350VAC

S2=300VAC、U2=350VAC

14~16位: 引出端代码

Digit 14~16: Terminal code

14位 Digit 14		15位 Digit 15		16位 Digit 16	
代码 Code	电极 Electrode	代码 Code	脚型 Lead kinked	代码 Code	脚长偏差 Length tolerance
3	0.8CU	A	2引线	0	L±1.0mm
4	1.0CU	D	4引线b=10.2mm	A	L±0.5mm
5	1.2CU	H	4引线b=20.3mm		

17~18位: 脚长

Digit 17~18: Lead length

00=5.5mm, 38=3.8mm, 40=4.0mm

00=5.5mm, 38=3.8mm, 40=4.0mm

■ 标准品一览表 Standard size

静电容量 Cap(uF)	Outline size (mm)			P ±0.5	P1 ±0.5	d ±0.5	Ī (A)	I _{max} 70°C@10kHz (A)	ESR @10kHz (mΩ)	Ls (nH)	Part number
	W	H	T								
Urms: 180V.AC, Un=250 V.AC, Undc=300V.DC											
4.0	32.0	22.0	13.0	27.5	----	1.0	280	7	6.7	16	C74405**H*□J24AA00
5.0	“	28.0	14.0	“	----	“	350	8	5.3	18	C74505**H*□J24AA00
6.8	“	33.0	18.0	“	----	1.2	476	11	3.9	21	C74685**H*□J25AA00
10	“	“	“	“	----	“	700	13	2.7	20	C74106**H*□J25AA00
10	41.0	32.0	17.0	37.5	----	“	400	10	4.9	22	C74106**J*□J25AA00
15	“	37.0	22.0	“	----	“	600	14	3.3	24	C74156**J*□J25AA00
18	42.0	36.0	23.0	“	----	“	720	14	2.7	25	C74186**J*□J25AA00
20	“	“	“	“	----	“	800	14	2.5	25	C74206**J*□J25AA00
22	41.0	41.0	26.0	“	----	“	880	14	2.2	26	C74226**J*□J25AA00
25	“	“	“	“	----	“	1000	14	2.0	27	C74256**J*□J25AA00
30	42.0	45.0	30.0	“	----	“	1200	14	1.6	28	C74306**J*□J25AA00
33	“	“	“	“	----	“	1320	14	1.5	29	C74336**J*□J25AA00
40	57.0	43.5	29.5	52.5	20.3	“	800	20	2.6	26	C74406**M*□J25HA00
50	“	50.0	35.0	“	“	“	100	24	2.1	28	C74506**M*□J25HA00
60	“	“	“	“	“	“	1200	27	1.7	29	C74606**M*□J25HA00
Urms: 250V.AC, Un=350 V.AC, Undc=475V.DC											
1.0	32.0	18.0	9.0	27.5	----	1.0	90	3	19.3	20	C74105**H*□N24AA00
1.5	“	20.0	11.0	“	----	“	135	4	12.9	“	C74155**H*□N24AA00
2.0	“	22.0	13.0	“	----	“	180	5	9.6	“	C74205**H*□N24AA00
2.2	“	“	“	“	----	“	198	6	8.8	“	C74225**H*□N24AA00
2.5	“	“	“	“	----	“	225	6	7.7	“	C74255**H*□N24AA00
3.0	“	24.5	15.0	“	----	“	270	7	6.4	“	C74305**H*□N24AA00
3.3	“	“	“	“	----	“	297	8	5.8	21	C74335**H*□N24AA00
3.5	“	28.0	14.0	“	----	“	315	8	5.5	23	C74355**H*□N24AA00
4.0	“	33.0	18.0	“	----	1.2	360	10	4.8	22	C74405**H*□N25AA00
4.5	“	“	“	“	----	“	405	“	4.3	23	C74455**H*□N25AA00
5.0	“	“	“	“	----	“	450	11	3.9	“	C74505**H*□N25AA00
6.8	“	37.0	22.0	“	----	“	612	14	2.8	24	C74685**H*□N25AA00
4.7	41.0	26.0	15.0	37.5	----	“	282	7	7.8	“	C74475**J*□N25AA00
5.0	42.0	28.0	14.0	“	----	“	300	8	7.3	26	C74505**J*□N25AA00
6.0	41.0	32.0	17.0	“	----	“	360	9	6.1	“	C74605**J*□N25AA00
6.5	“	“	“	“	----	“	390	10	5.6	“	C74655**J*□N25AA00
6.8	“	33.5	18.5	“	----	“	408	“	5.4	27	C74685**J*□N25AA00
7.5	“	“	18.5	“	----	“	450	11	4.9	“	C74755**J*□N25AA00
8.0	“	37.0	22.0	“	----	“	480	12	4.6	“	C74805**J*□N25AA00

◇ 备注：特殊需要可根据客户要求另行设计

◇ Note: Special requirements can be designed according to customer requirements

■ 标准品一览表 Standard size

静电容量 Cap(uF)	Outline size (mm)			P ±0.5	P1 ±0.5	d ±0.5	Ī (A)	I _{max} 70°C@10kHz (A)	ESR @10kHz (mΩ)	Ls (nH)	Part number
	W	H	T								
Urms: 250V.AC, Un=350 V.AC, Undc=475V.DC											
10	41.0	37.0	22.0	37.5	----	1.2	600	13	3.7	28	C74106**J*□N25AA00
12	“	41.0	26.0	“	----	“	720	14	3.0	29	C74126**J*□N25AA00
15	“	“	“	“	----	“	900	“	2.4	30	C74156**J*□N25AA00
18	“	43.0	28.0	“	----	“	1080	“	2.0	31	C74186**J*□N25AA00
20	42.0	45.0	30.0	“	----	“	1200	“	1.8	32	C74206**J*□N25AA00
22	“	“	“	“	----	“	1320	“	1.7	33	C74226**J*□N25AA00
25	57.0	43.5	29.5	52.5	20.3	“	750	18	3.3	31	C74256**M*□N25HA00
30	“	“	“	“	“	“	900	20	2.7	32	C74306**M*□N25HA00
35	“	50.0	35.0	“	“	“	1050	23	2.3	32	C74356**M*□N25HA00
40	“	“	“	“	“	“	1200	25	2.0	33	C74406**M*□N25HA00
Urms: 300V.AC, Un=425V.AC, Undc=560V.DC											
1.0	32.0	20.0	11.0	27.5	----	1.0	100	4	15.9	16	C74105**H*□S24AA00
1.5	“	22.0	13.0	“	----	“	150	5	10.6	17	C74155**H*□S24AA00
2.0	“	24.5	15.0	“	----	“	200	6	8.9	18	C74205**H*□S24AA00
2.2	“	“	“	“	----	“	220	7	8.0	“	C74225**H*□S24AA00
2.5	“	28.0	14.0	“	----	“	250	8	7.2	19	C74255**H*□S24AA00
3.0	“	33.0	18.0	“	----	1.2	300	9	6.4	21	C74305**H*□S25AA00
3.3	“	“	“	“	----	“	330	10	5.3	20	C74335**H*□S25AA00
3.5	“	“	“	“	----	“	350	“	4.8	21	C74355**H*□S25AA00
4.0	“	“	“	“	----	“	400	11	4.6	“	C74405**H*□S25AA00
4.7	“	37.0	22.0	“	----	“	470	13	4.0	22	C74475**H*□S25AA00
5.0	“	“	“	“	----	“	500	“	3.4	“	C74505**H*□S25AA00
6.8	“	“	“	“	----	“	680	14	3.2	23	C74685**H*□S25AA00
3.0	41.0	26.0	15.0	37.5	----	“	210	6	10.1	22	C74305**J*□S25AA00
3.3	“	“	“	“	----	“	231	7	9.2	“	C74335**J*□S25AA00
3.5	42.0	28.0	14.0	“	----	“	245	“	8.6	23	C74355**J*□S25AA00
4.0	41.0	32.0	17.0	“	----	“	280	8	7.6	24	C74405**J*□S25AA00
4.5	“	“	“	“	----	“	315	9	6.7	“	C74455**J*□S25AA00
4.7	“	“	“	“	----	“	329	“	6.4	“	C74475**J*□S25AA00
5.0	“	33.5	18.5	“	----	“	350	10	6.0	“	C74505**J*□S25AA00
6.0	“	“	“	“	----	“	420	11	5.0	25	C74605**J*□S25AA00
6.8	“	37.0	22.0	“	----	“	476	12	4.4	“	C74685**J*□S25AA00
8.0	“	“	“	“	----	“	560	13	3.8	26	C74805**J*□S25AA00
10	“	41.0	26.0	“	----	“	700	14	3.0	28	C74106**J*□S25AA00
12	“	43.0	28.0	“	----	“	840	“	2.5	29	C74126**J*□S25AA00
15	42.0	45.0	30.0	“	----	“	1050	“	2.0	30	C74156**J*□S25AA00
18	57.0	43.5	29.5	52.5	20.3	“	720	17	3.8	29	C74186**M*□S25HA00
20	“	“	“	“	“	“	800	18	3.4	“	C74206**M*□S25HA00
22	“	“	“	“	“	“	880	20	3.1	30	C74226**M*□S25HA00
25	“	50.0	35.0	“	“	“	1000	21	2.7	31	C74256**M*□S25HA00
28	“	“	“	“	“	“	1120	23	2.4	32	C74286**M*□S25HA00

◇ 备注：特殊需要可根据客户要求另行设计

◇ Note: Special requirements can be designed according to customer requirements

■ 标准品一览表 Standard size

静电容量 Cap(uF)	Outline size (mm)			P ±0.5	P1 ±0.5	d ±0.5	Ī (A)	I _{max} 70°C@10kHz (A)	ESR @10kHz (mΩ)	Ls (nH)	Part number
	W	H	T								
Urms: 350V. AC, Un=480V. AC, Undc=600V. DC											
0.33	32.0	18.0	9.0	27.5	----	0.8	17	1.6	53.9	17	C74334**H*□U2CA00
0.39	“	“	“	“	----	“	20	1.7	46.0	“	C74394**H*□U2CA00
0.47	“	“	“	“	----	“	24	1.9	38.6	“	C74474**H*□U2CA00
0.68	“	20.0	11.0	“	----	“	35	2.5	27.5	18	C74684**H*□U2CA00
0.82	“	22.0	13.0	“	----	“	42	3.0	23.3	“	C74824**H*□U2CA00
1.0	“	“	“	“	----	“	51	3.2	19.6	“	C74105**H*□U2CA00
1.5	“	24.5	15.0	“	----	“	76	4.2	14.0	19	C74155**H*□U2CA00
2.0	“	30.0	16.0	“	----	“	102	5.0	11.1	21	C74205**H*□U2CA00
2.2	“	“	“	“	----	“	112	5.2	10.4	20	C74225**H*□U2CA00
2.5	“	“	18.0	“	----	1.0	127	6.2	7.0	22	C74255**H*□U2CA00
3.0	“	37.0	22.0	“	----	“	153	7.4	5.8	24	C74305**H*□U2CA00
3.3	“	“	“	“	----	“	168	7.7	5.3	“	C74335**H*□U2CA00
3.5	“	“	“	“	----	“	178	7.9	5.0	23	C74355**H*□U2CA00
4.0	“	“	“	“	----	“	204	8.2	4.4	“	C74405**H*□U2CA00
1.0	41.0	22.0	11.0	37.5	----	“	36	2.8	28.0	24	C74105**J*□U24A00
1.5	“	24.0	13.0	“	----	“	55	3.7	19.3	25	C74155**J*□U24A00
2.0	“	26.0	15.0	“	----	“	73	4.6	14.9	26	C74205**J*□U24A00
2.2	“	“	“	“	----	“	80	4.8	13.7	25	C74225**J*□U24A00
2.5	“	30.0	16.0	“	----	“	91	5.3	12.3	27	C74255**J*□U24A00
3.0	“	“	“	“	----	“	109	5.7	10.5	26	C74305**J*□U24A00
3.3	“	32.0	17.0	“	----	“	120	6.2	9.7	29	C74335**J*□U24A00
3.5	“	“	“	“	----	“	128	6.4	9.3	28	C74355**J*□U24A00
4.0	“	33.5	18.5	“	----	“	146	7.0	8.3	29	C74405**J*□U24A00
4.5	“	37.0	22.0	“	----	“	164	8.0	7.6	31	C74455**J*□U24A00
5.0	“	“	“	“	----	“	182	8.3	7.0	30	C74505**J*□U24A00
5.5	“	“	“	“	----	“	201	8.6	6.6	29	C74555**J*□U24A00
6.0	“	41.0	26.0	“	----	“	219	9.7	6.2	32	C74605**J*□U24A00
6.5	“	“	“	“	----	“	237	10.0	5.8	31	C74655**J*□U24A00
7.0	“	“	“	“	----	“	255	10.3	5.5	“	C74705**J*□U24A00
7.5	“	“	“	“	----	“	274	10.5	5.3	30	C74755**J*□U24A00
8.0	“	“	“	“	----	“	292	“	5.1	“	C74805**J*□U24A00
8.5	“	43.0	28.0	“	----	“	310	“	4.9	32	C74855**J*□U24A00
9.0	“	“	“	“	----	“	328	“	4.7	31	C74905**J*□U24A00
9.5	“	45.0	30.0	“	----	“	347	“	4.5	33	C74955**J*□U24A00
10.0	“	“	“	“	----	“	365	“	4.4	32	C74106**J*□U24A00

◇ 备注：特殊需要可根据客户要求另行设计

◇ Note: Special requirements can be designed according to customer requirements

■ 标准品一览表 Standard size

静电容量 Cap(uF)	Outline size (mm)			P ±0.5	P1 ±0.5	d ±0.5	Ī (A)	I _{max} 70°C@10kHz (A)	ESR @10kHz (mΩ)	Ls (nH)	Part number
	W	H	T								
Urms: 350V. AC, Un=480V. AC, Undc=600V. DC											
10.0	57.0	45.0	25.0	52.5	----	1.2	260	11.6	5.7	34	C74106**M*□U25A00
11.0	“	“	“	“	----	“	286	11.9	5.3	33	C74116**M*□U25A00
12.0	“	“	29.5	“	20.3	“	312	14.1	4.4	29	C74126**M*□U25H00
5.0	“	“	35.0	“	“	“	391	16.4	3.7	31	C74505**M*□U25H00
16.0	“	“	“	“	“	“	417	16.8	3.5	30	C74166**M*□U25H00
18.0	“	50.0	“	“	“	“	469	18.1	3.2	33	C74186**M*□U25H00
20.0	“	“	40.0	“	“	“	521	19.	2.9	32	C74206**M*□U25H00
21.0	“	“	“	“	“	“	547	20.1	2.8	32	C74216**M*□U25H00
25.0	“	55.0	45.0	“	“	“	651	22.8	2.5	34	C74256**M*□U25H00
27.0	“	“	“	“	“	“	703	23.5	2.4	33	C74276**M*□U25H00

- ◇ 备注：特殊需要可根据客户要求另行设计
- ◇ Note: Special requirements can be designed according to customer requirements
- ◇ 1.“**”、“*”表示内部特征码；“**”、“*”=Internal use
- ◇ 2.“□”表示容量偏差；“□”= Capacitance tolerance